

RanHeat

WA 150

BAGLOADER

Turn your wood waste into energy and save money.



HOW IT WORKS

- The lid is raised, and a bag of *machine wood waste* is emptied into the container.
- The lid *safety switch* will deactivate the motor and halts all moving parts.
- The fuel is conveyed to the burner through the *auger*.
- Only *granulated* or *machine waste dust* is suitable for the BagLoader, and *small offcuts* may be introduced through the front door.



WHO IS THE BAGLOADER FOR?

- The BagLoader is for customers in the wood working industry with bagged or binned dust extraction systems and require a safe method of burning their wood dust but do not have enough scale for require a silo with an automatic feed into a burner.



HOW MUCH CAN A WA 150 BAGLOADER BURN?

- A bag of dust around 0.5m³ will run the system for 2 hours. So, assume 20 hours a week of constant running is around 0.5tons. If you are wanting to burn more waste than this, it might be worth looking at a siloed system with an automatic feed. This will give you greater throughput, automation, and labour savings.



WHAT DO I DO IF I PRODUCE MORE WOOD THAN I CAN BURN WITH A BAGLOADER?

- If you find you need greater heating consistency and throughput in the future, Ranheat can retro fit a silo, full WA 150 control panel and transfer system. This reuses the fire chamber, heat exchanger, flue gas cleaning and chimney.

KEY FEATURES

INDUCED DRAFT FAN

- Allowing for longer flame paths and cyclonic flue gas cleaning, ensuring a clean and efficient burn.

LARGE SURFACE AREA HEAT EXCHANGER SURFACES

- This allows for efficient heat exchange between the flue gas and heating air.

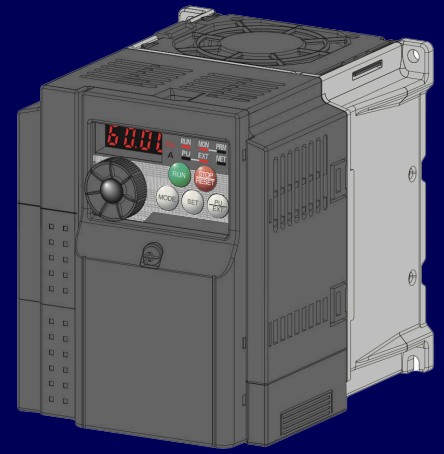
EXTREMELY LONG LIFETIME

- As there is efficient heat exchange, there are no hot spots in the system, and the mild steel used for the heat exchanger lasts longer. This complements the modular design of the system so each part and assembly is individually replaceable.

OPTIONS

ENERGY SAVING INVERTERS

- This changes all the motors in the panel from direct online motors to inverter controlled. The WA 150 BagLoader has a combined 8.5kW of maximum energy draw. The inverter control of these motors reduces the electrical load by 2/3. At an energy cost of 25p/kWh this is a return on investment of 2-years.
- **£5,600 plus VAT**



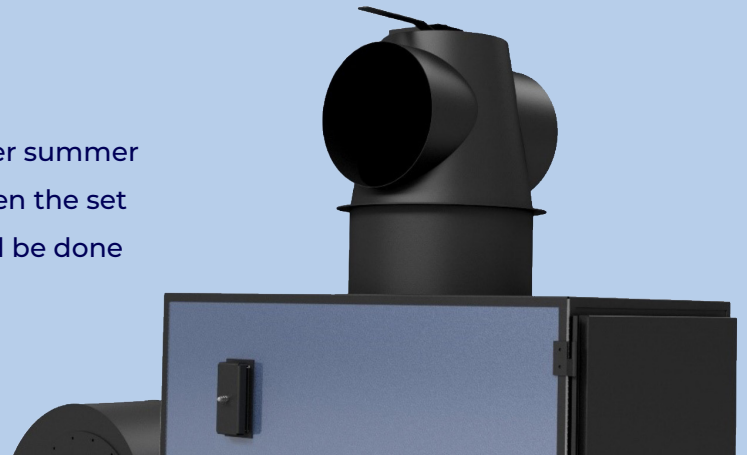
TOUCH-SCREEN HMI

- The default system comes with just switches and dials to operate the machine with a Web HMI to look at usage and other settings. Customers can choose to have a physical HMI on the screen to change settings with requiring another device.
- **£1,750 plus VAT**



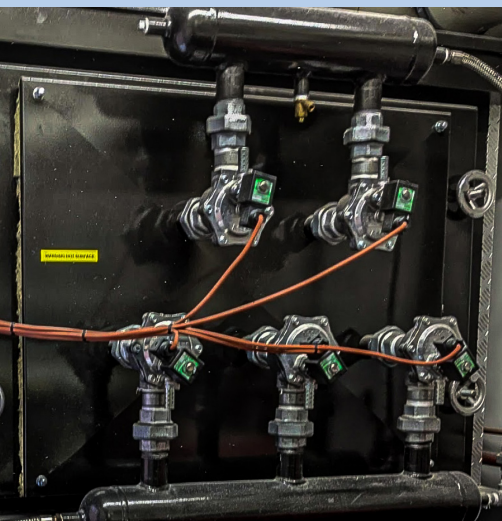
AUTOMATIC WINTER SUMMER DIVERTER

- Includes a thermostat and actuator on the winter summer diverter to automatically divert heat outside when the set temperature is met. On the base unit, this would be done with a manual diverter valve.
- **£2,500 plus VAT**



AUTOMATIC TUBE CLEANING

- To maintain best performance with the base system, heating tubes need to be cleaned with a brush and rod every week. Automatic Tube cleaning blasts the fire tubes with compressed air and regular intervals to break down soot buildup in the tubes, removing the requirement for weekly manual cleans. Manually cleaning the tubes can be done during base deashing and takes around 20 minutes a week.
- **£12,850 plus VAT**



Ran Heat
Engineering Ltd

Contact Us

- 📍 62 St James Mill Rd, Northampton, England, NN5 5JP
- ✉ Sales@ranheat.com
- 🌐 www.ranheat.com